

The background is a solid pink color with a repeating pattern of white line-art icons. The icons include open books and question marks, arranged in a grid-like fashion. The text is centered in the middle of the page.

Guided Reading Skills

Inference

Inference

What is Inference?

Inference is where we 'read between the lines' to gain a greater understanding of what we are looking at and to reach logical conclusions.



Inference

- Who is in the picture?
- Is it cold or hot in the mountains?
- How does the mountaineer feel?
- Why has the mountaineer chosen to climb to this location?



Inference

- What is happening in this picture?
- How does the child feel about it?
- Why isn't the child wearing a top?



Inference

- Why are these men playing instruments outside?
- Why do two of the men have their mouths open?
- How does playing music make them feel?
- What sort of music are they playing?



Inference

- What is the girl looking at?
- How does she feel about what she can see?
- What is the weather like where the girl is?



Inference

- What is happening here?
- How can you tell that the men are putting in a lot of effort?
- Why does the man at the back only have one hand on the rope?
- How can you tell that these men belong to a club or group?
- What is the weather like?



Inference

- Where is this bench?
- Who sits on it?
- Is this bench new or old?
- Does this bench look comfortable?



Inference

- What are these children doing?
- Where are they?
- How do they feel about what they are doing?
- What are they going to do next?
- Do these children know each other?



Inference

- Why are these children on the floor?
- What are they looking at?
- Why are they wearing hats?
- Why do you think they are on a bridge?



Inference

- Why is the helicopter flying towards the boat?
- Who do you think is in the helicopter?
- How might the people on the boat be feeling?
- What impact is the weather having on this scene?



Inference

- What is this child doing?
- Do you think he has done this before?
- Is this child at home or on holiday?
- Why is he wearing warm clothes?



Inference

- Is this photograph modern?
- Where do you think these children are?
- How do they feel about being there?



Inference

- What do you think these people are talking about?
- Are they both feeling the same way?
- Which person is the most relaxed?
- How can you tell?



Inference

If you see someone with a cast on their leg, can you infer that:

- ...they will have a cast on their arm too?
- ...they broke their leg?
- ...they injured themselves playing sport?
- ...they must wear the cast for six months?

Inference

If your teacher is not at school today, can you infer that:

...your teacher is never going to return?

...there will be no lessons at school today?

...you will not be given any homework?

...your teacher is sick or at a meeting?

Inference

Can you read the sentence below and find the correct inference?

Tom couldn't believe his eyes! His car was cleaner than he had ever seen it!

Can you infer that:

- ...Tom's car was a Rolls Royce?
- ...someone had cleaned Tom's car as a surprise?
- ...Tom's car was red?
- ...Tom had never cleaned his car before?

Inference

Can you read the sentence below and find the correct inference?

Boom! Fizz! Another one exploded over the children's heads as they grinned and yelled in excitement.

Can you infer that:

- ...the children were bored?
- ...it was winter time?
- ...the children loved fireworks?
- ...it was the first time the children had seen fireworks?

Inference

Can you read the following passage and answer the questions?

My baby sister picked up her vegetables and – one by one – threw them off her highchair and onto the floor. She kicked out her legs and giggled as they were quickly licked off the floor. When Mum came back into the room, she shouted at the dog to go away.

- Why did the baby throw the vegetables onto the floor?
- Why did mum shout at the dog?
- How did the baby feel when the vegetables were licked off the floor?
- How do you know?

Inference

Can you read the following passage and answer the questions?

Will sighed and clicked the mouse again. It still wasn't working. Then suddenly the screen went black. "Oh no!" wailed Will. "It's all gone! I haven't got time to start again!"

- What was Will trying to get to work? How do you know?
- How did Will feel when the screen went black?
- How long do you think Will had been sitting there?
- What might Will have been doing before this happened?

Inference

Can you read the following passage and answer the questions?

When Maisie drew her curtains that morning, she smiled and wrapped her arms around herself. There would be no school today, that's for sure. She would get wrapped up and dig her sledge out of the garage. Then she would spend the rest of the day wrapped in a blanket. "Porridge for breakfast, I think!" she said.

- What did Maisie see outside her bedroom window?
- Why was she going to have porridge for breakfast?
- How did Maisie feel about there being no school today?

Inference

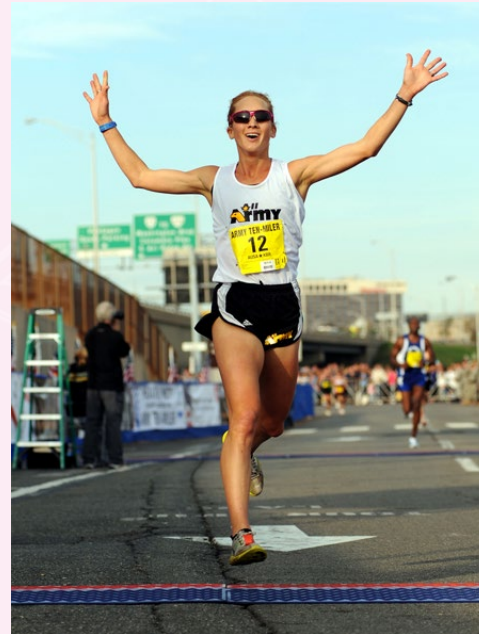
Can you read the following passage and answer the questions?

The letter box banged and I ran quickly to the door. With shaking hands, I slowly picked up the letters off the floor. A bill. A postcard. And then finally the letter I had been waiting for. I stared at the heavy cream envelope and the handwritten address. I hoped for good news.

- How did the writer feel when the post arrived?
- Was the writer expecting this letter?
- How do you know the letter is important?

Inference

- What can you infer from this picture?
- What makes you think that?



Inference

- What can you infer from this picture?
- What makes you think that?



Inference

- What can you infer from this picture?
- What makes you think that?



Inference

- What can you infer from this picture?
- What makes you think that?



Inference

- What can you infer from this picture?
- What makes you think that?



Inference

- What can you infer from this picture?
- What makes you think that?



Inference

- What can you infer from this picture?
- What makes you think that?



Inference

- What can you infer from this picture?
- What makes you think that?



